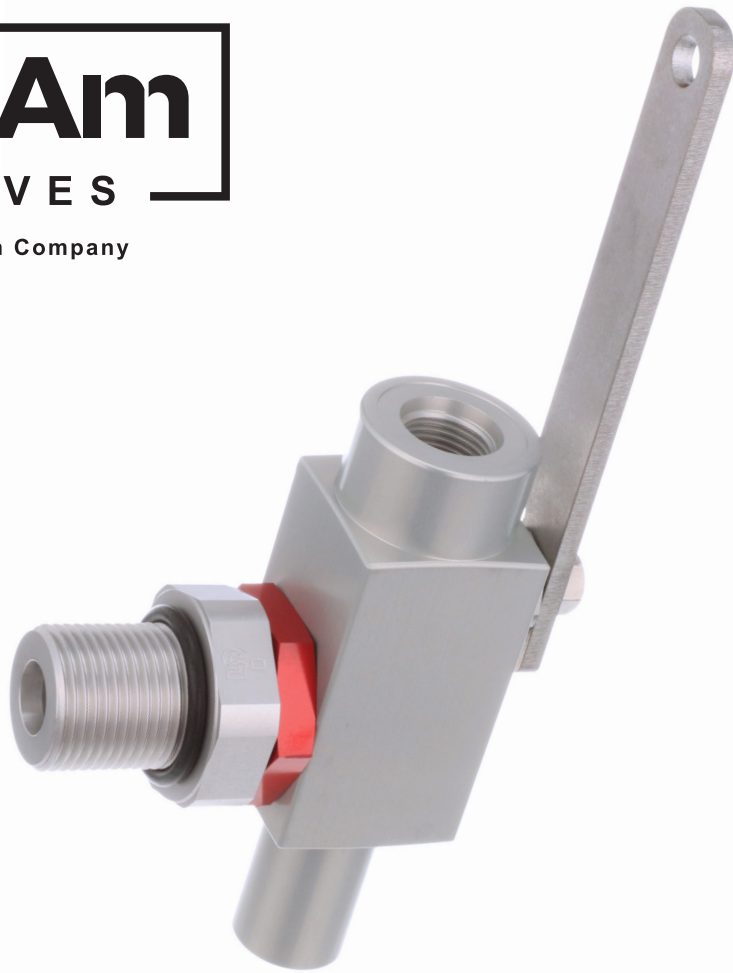




a BayoTech Company



# 1/4 TURN VALVE

The most complete high-pressure solution available.

[noramvalves.com](http://noramvalves.com)

## 1/4 TURN VALVE

The 1/4-Turn Valve is the perfect solution for high-pressure gaseous applications. Available for both cylinder and line usage, this valve provides a high-strength, light-weight construction for maximum flexibility. Delivering quick on/off full flow, it supports control over the entire system movement while providing complete leakage security with fitted, long-lasting seals.

### KEY BENEFITS

#### Flexible Customization

NorAm's 1/4-Turn Valve line is offered in two formats to fit multiple applications:

1. Tank Head Valve - Provides composite cylinder manufacturers the most complete high-pressure solution on the market today. Available in 450 bar and 520 bar configurations to suit customer needs. Several inlet port styles are available: SAE (standard), 60° cone & thread (optional), NPT (upon request).
2. In-Line Valve - Provides a lightweight, reliable, high pressure, ball valve design. Available with NPT, SAE, 60° cone & thread ports, the valve gives customers flexibility and reliability with critical in-line valves. In-line valves have the same 3 inlet port options as noted in 1., above.

#### Superior Safety

The 1/4-Turn Valve includes NorAm Valve's proprietary glass-blub pressure relief device (PRD). The PRD ensures emergency venting can occur efficiently and rapidly, thereby greatly improving safety.

1/4 Turn Valve		
Catalog number		
Pressure ratings (versions)		350, 450, 520 bar
Valve Cv		2.02
Valve life (open/close cycles)		10,000
Over pressure (burst)	350, 450 bar	> 20000 psi
	520 bar	> 30,000 psi
Operating temperature		-40 to +185°F
PRD Activation temperature	Standard	102°C (216°F)
	Optional	110°C (230°F)
PRD Cv		1.64
Valve-head indexability		365°
Interchangeable valve studs for common cylinder neck threads		1 1/8"-12 (350 bar)
		1 1/2"-12 (450,520 bar)
Inlet port options	SAE -8 heavy duty	3/8"-16 UNF ORB
	3/8" MP tube (HiP)	9/16"-18 UNF x 60° (LF6)
Body dimensions		5.03" h x 1.50" w x 1.56" d
Body & stud material	350, 450 bar	6061-T6 aluminum
	520 bar	316 stainless

All specifications are subject to change.

### APPLICATIONS

- » Composite Cylinders
- » Gas Lines
- » Compressed Gas Storage
- » Chemical Plants
- » Power Plants

### FEATURES

- » High-strength, light-weight, aluminum construction (up to 450bar, stainless for 520bar versions)
- » Integrated, glass-bulb PRD for reliable activation within the valve
- » Fully indexable adjustment, eliminating the need to "clock" cylinders
- » SAE O-ring sealed inlet standard, 60° cone & thread optional, NPT upon request
- » High flow rate with full-port, ball valve design



### CONTACT

Phone 1-800-370-BAYO (2296)  
Email sales@noramvalves.com  
Web noramvalves.com